

Morphological and Some Wood Properties of *Juniperus Oxycedrus* Subsp. *Macrocarpa* in Derna Region, East Libya

A.F.TASHANI, H. A. Y. Faraj

ARTICLE INFO

Vol. 2 No. 1 June, 2020
Pages (18 - 26)

Article history:

Revised form 16 April 2020

Accepted 4 May 2020

Authors affiliation

Department of Forestry Faculty of Natural
Resources and Environmental Sciences,
University of Omar Al-Mukthar, Al-Baida,
Libya

ameltashani@yahoo.com

Keywords:

Juniperus oxycedrus subsp.
macrocarpa, Libya , wood,
morphology

ABSTRACT

This work was designed to evaluate morphologic properties of leaf, cone and seed and to clarify the taxonomy of this species. The study also investigated some of the wood properties (specific gravity, fiber length) of *Juniperus oxycedrus subsp. macrocarpa* tree grown in Derna region in the east of Libya. The morphological properties (leaf length, leaf width, seed size and cone size) resulted have been observed to be important for taxonomy of this species. Also, the Pearson coefficient correlation among morphological parameters showed a positive correlation. On the other hand, results indicated that the specific gravity values ranged between (0.392-0.386). When study the relationship between specific gravity and cambial age. The general trend showed that the relationship was negative with age, where it was clear specific gravity values decreased with the increase in distance from the marrow of pith. The values of the R^2 ranges from 59.9% -70.9%, and when examining the relationship between fibre length and cambial age, there was a positive effect; fibre length increased radically from pith to bark. Also, *J. xycedrus subsp. macrocarpa* tree is a short fibre wood with a mean fiber length of 1.75 mm.

الملخص

تم تصميم هذا العمل لتقييم الخصائص المورفولوجية للأوراق والمخروط والبذور، لتوضيح تصنيف هذا النوع ، وكذلك التحقق من بعض خصائص الخشب كالثقل النوعي وطول الألياف في شجرة العرعر الشوكي *Juniperus oxycedrus subsp. macrocarpa* بمنطقة درنة ، ليبيا. لخصت النتائج أن الخصائص المورفولوجية لطول الأوراق وعرضها، وحجم البذور والمخروط كانت مهمة لتصنيف هذا النوع. أيضا كانت علاقة الارتباط بين الخصائص المورفولوجية إيجابية بين الصفات. من ناحية أخرى، أوضحت النتائج أن قيم الثقل النوعي للخشب تراوحت بين 0.386-0.392، كذلك كانت علاقة الأنحدار للتقل النوعي سلبية مع العمر الكامبيومي، حيثاً تضح أن قيم الثقل النوعي تتناقص كلما زادت المسافة من النخاع إلى القلب فكانت قيم معامل التحديد R^2 تتراوح من 59.9%-70.9%. أيضاً بدراسة العلاقة بين طول الألياف والعمر كان هناك تأثير إيجابي حيث أن متوسط طول الألياف يزداد كلما ابتعدنا عن النخاع. كما يعتبر خشب العرعر الشوكي من النوع قصير الألياف متوسط طولها 1.75 ملم.

INTRODUCTION

The *Juniperus* genus. (Cupressaceae, gymnosperms) consists of about 60 dioecious woody species, and it is divided into three sections: J. sect. *Caryocedrus* Endl., J. sect. *Juniperus*, and J. sect. *Sabina* Spach (Adams, 2012). The *Juniperus oxycedrus* group is included within J. sect. *Juniperus* (Adams, 2014). *J. oxycedrus* was described by (Linnaeus, 1753) based on plants from the western part of the Mediterranean basin ("Habitat in Hispania, G. Narbonensi").

Juniperus oxycedrus L. belongs to the section *Oxycedrus* of the genus *Juniperus*. It is a variable species with three subspecies: *J. oxycedrus subsp. oxycedrus*, *J. oxycedrus subsp. macrocarpa* and *J. oxycedrus subsp. badia*. (Greuter *et al.*, 1984) Those differ in habit, cone size and needle width (Amaraltranco, 1968) (Bayet *et al.*, 1991).

(Smith, 1816) described coastal juniper and named it *Juniperus macrocarpa*. (Ball, 1878) classified it as a subspecies of *Juniperus oxycedrus* L., a taxonomic status still supported by different authors (Do Franco, 1963) (Fernandez Galiano, 1987) The analysis of related taxa, as *J. oxycedrus subsp. macrocarpa* (*J. macrocarpa*), *subsp. transtagana* (*J. navicularis*) and *subsp. badia*, revealed the strong separation of *subsp. macrocarpa* (Klimko *et al.*, 2007).

J. oxycedrus subsp. macrocarpa is a tree, in good condition reaching 10-12m in height. It has large cones, 1.2-1.5mm across, light to dark brown or some what purplish and brownies. Its needles are up to 2.5 mm wide (Klimko *et al.*, 2004) a dioecious species typical of coastal dunes in the Mediterranean region (Jalas and [eds.], 1973); (Do Franco, 1963). Female individuals require two years to develop mature female cones, which are possible to find at different stages of maturity on the same plant simultaneously (Juan *et al.*, 2006); ripening and dispersal of the female cones occur from autumn to spring (Pinna *et al.*, 2014). The tolerance to salt and sand-laden marine Plant Ecol 123 winds (Ge'hu *et al.*, 1990), the

adaptation to substrate movements (García Novo and Merino, 1993).

This subspecies occurs around the Mediterranean on the coast in an environment that is locally under threat from development but still too widespread to be of conservation concern. Recorded from the Mediterranean and Black Sea coasts: Albania, Algeria, Bosnia-Herzegovina, Bulgaria, Croatia, France, Greece, Italy, Malta, Morocco, Spain, Turkey, Ukraine. (Farjon, 2013).

J. oxycedrus subsp. macrocarpa is a rare woody species found in El-Jabal El-Akhdar, Libya in site north-west Derna. The distribution of this population is physiographically dependent, where the individuals are restricted to the north-facing slope of the first rocky ridge close to the sea shore.

The basic morphological features of leaves, cones and seeds in three populations of *J. oxycedrus subsp. macrocarpa* from Italy were investigated biometrically. In addition, the intra- and inter-population variation of *J. oxycedrus subsp. oxycedrus* in the Mediterranean region were determined biometrically on the basis of the morphological features of leaves, seeds and cones (Klimko *et al.*, 2004). The morphological properties (leaf length and weight, unripe cones weight) of *J. communis* within different ecological situations in habitats in Lithuania were investigated (Vaičiulytė and Ložienė, 2013). The morphological of fruit and seed color, seed shape, and the number of resin pits on the seed surface have been observed to be important morphological properties in terms of the systematic of the taxa (Köroğlu *et al.*, 2018a) some character (e.g. leaf mucro length, leaf width, seed-cone size and seed size) resulted useful to discriminate taxa (Roma-Marzio *et al.*, 2017).

Wood fiber is the basic unit of wood especially for fast-growing trees. Studying the morphological characteristics of fibers should assist in understanding and interpreting the behavior of wood products. It is well known that long fibers are preferred in production of high strength paper (Horn, 1974) and (Francis

et al., 2006). The average fiber length at a breast height could give a good estimation for the total tree fiber length (Abo-Hassan and El-Osta, 1982).

Specific gravity of wood is the measure of the relative amount of solid wall material and is the best index that exists for predicting the strength properties of wood (Panshin and DeZeeuw., 1980.). In the meantime, specific gravity of wood is the most important technological properties for wood industry, which profoundly determine and affect the wood quality (Erickson and Harrison, 1974; Haygreen and Bowyer, 1996). Specific gravity of wood is usually used as an indicator of the mechanical properties of wood (EL *et al.*, 1981) and the suitability of wood for wood industry (Mohamed, 2004.) and charcoal (Hindi, 2001). Fiber length is a wood-quality parameter of important to pulp and paper making (Horn, 1974).

Very few studies have been offered a wood properties and morphological analysis and taxonomy of *J.oxycedrus subsp. macrocarpa*. Therefore, we need for recovery of this taxon. The aim of this work is to clarify the taxonomy of this species by study the morphological properties of leave, cone and seed, also were study some wood properties, such as specific gravity and tracheid length of *J. oxycedrus subsp. macrocarpa* naturally growing in north-west Derna, Libya.

MATERIALS AND METHODS

The study area was located the second terrace of El-Jabal El-Akhdar mountain in Derna region east Libya, where the city between longitudes 22° 38' 0" N and 32° 46' 0" E). The climate of the study area is comparable to that of El-Jabal El-Akhdar with mean temperature of about 20 C⁰. The average rain-fall ranges between 200-300 mm (El-Barasi and Saaed, 2013).

Morphological investigation:

Twenty trees were randomly selected of *J. oxycedrus subsp. macrocarpa* growing on sandy dunes. We studied morphological traits individuals: cone length (mm); cone diameter (mm), seed number per cone, seed length (mm),

seed thickness (mm), needle length (mm). The parameters were measured using a numerical caliper (0.01mm). Fifty cone, fifty seeds and fifty needle from all the trees were measured following the procedures described by (Klimko *et al.*, 2007).

Wood properties:

Samples of 5 cm thick discs were cut off at a 1.3 m height of all sample trees (3 trees), 2cm width radial strip was cut from each sample at horizontal direction from pith to bark (Tashani, 2016).

Specific gravity:

Wood specific gravity was determined by using the maximum moisture content methods (Smith, 1954). The dimensions of the sample tree were 2×2×2 cm in dimensions and were divided into 5 parts from pith to bark from wood disk taken at diameter at breast height (dbh).

Fibre length

The dimensions of the samples were 2×2×2 cm and were divided into 5 parts from pith to bark from wood disk taken at dbh for each tree, then broken into small pieces macerated in 1:1 glacial acetic acid: hydrogen peroxide solution 30% at 60°C, for 48 h. The macerated fibers were stained using safranin stain (Franklin, 1945).

Statistical analysis

Correlation between different studied morphological parameters was evaluated using Pearson correlation coefficient.

The simple liner regression was used to determine the relationship between the trees age and specific gravity and fibre length. Simple phenotypic correlations were determined for all traits using SPSS ver.16 package. The regression function between tree age and each of the studied trait was predicted according to (Kleinbaum and Kupper., 1978).

RESULTS AND DISCUSSION

The morphological properties of leaves, cones, seeds :

J. oxycedrus subsp. macrocarpa have needle-like leaves. The apex of the leaf is acute, acuminate or mucronate. Cones usually consist of 3 seeds. The shape of cone is globose or ovoid and red-brown. *J. oxycedrus spp* is a tree with a height mean 2.65 m, while a diameter mean at dbh is 59.7cm. It has large cones, on mean, cones were length and diameter 15.38 ,15.65 mm respectively ,light to dark brown or some what purplish. As well as the length and thickness of seed found as 6.80,4.72 mm respectively. The mean number of seeds per cone was found three ovules.

The needle of *J. oxycedrus sub. macrocarpa* linear needle. The mean length and width of leaf found as 15.08,2.650 mm, respectively. Were similar to those reported earlier by (Browicz, 1996), (Zunni and Bayoumi, 2006) and (Koroglu et al., 2018). Morphological data are important in the apprehension of life cycles, geographic and ecologic distributions, evolution, conservation status, as well as species delimitation (Kaplan, 2001).

The Pearson coefficient correlation among morphological parameters of the *J. oxycedrus subsp. macrocarpa* revealed that the characteristics describing the seed, cone and leaf showed a positive correlation among each other. The correlation matrix among all studied morphological traits is summarized in fig. (1,2,3). The cone length has a low correlation with the cone diameter, $r = 0.088$. Moreover, the seed length showed positive correlation with seed thickness ($r = 0.154$). In contrast, the leaf thickness showed a low correlation with leaf length ($r = 0.056$).

All morphological characters are based on the taxonomic features of trees. They are used in fodder, timber, oil, beverages, and ornamental purposes. On the basis of these characteristics trees can be easily identified and utilized in various purposes, which is a baseline for the forest field and useful to the upliftment of forest economy by proper utilization of tree parts (Prakash, 2019).

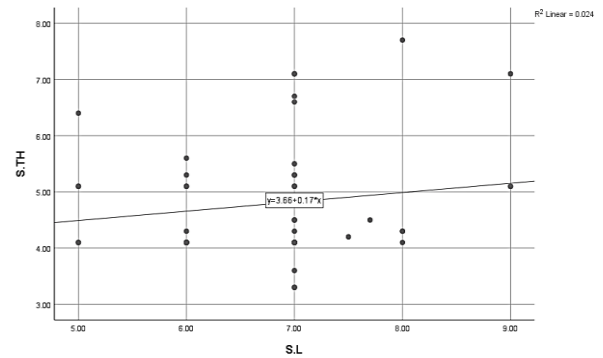


Figure 1. Pearson coefficient correlation of seed length (S.L) and seed thickness (S.TH).

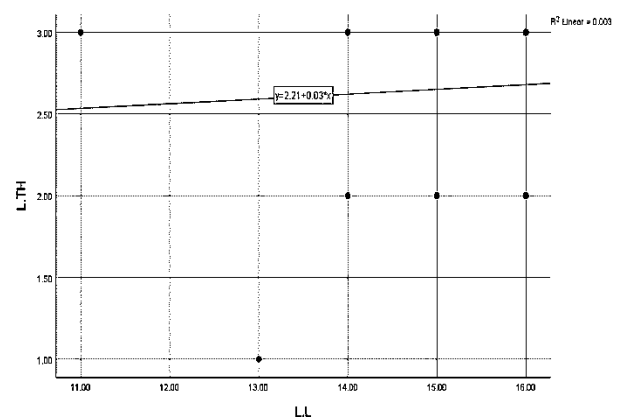


Figure 2. Pearson coefficient correlation of leaf length (L.L) and leaf thickness (L.TH).

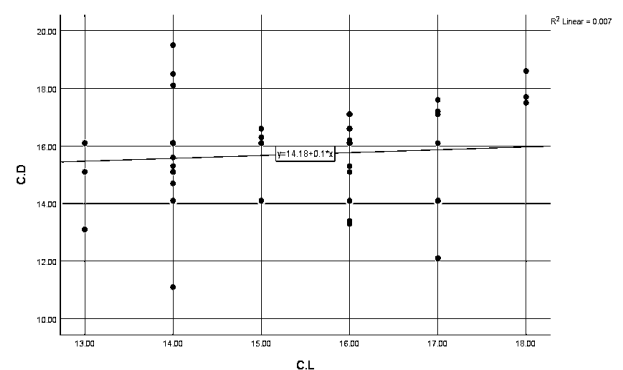


Figure 3. Pearson coefficient correlation of cone length (C.L) and cone diameter (C.D).

Finally, Morphological characters are used for identification because it is a basic method since nineteenth century and easily observable. For the study of morphological characters one need not to have sophisticated laboratory arrangements, a hand lens or dissecting

microscope or light microscope is enough to study these characters.

Specific gravity(SG)

Table (1) illustrates the relationship between tree age and specific gravity values of wood *J. oxycedrus subsp. macrocarpa*. where study showed that the values of R² (Coefficient of determination) were high ranged (59.9-70.9%) and the simple regression relationship also showed that the values of specific gravity have a negative relationship with the cambium age, as it is clear of that the values of specific gravity decrease as the distance from the marrow increases. This pattern of variation in wood specific gravity was in agreement with (Osazuwa-Peters *et al.*, 2014) and also were similar to those reported earlier by (Tashani, 2016) (Wani *et al.*, 2014) in a study on *Juniperus phoenicia* and *Pinus halepensis*, wherein they mentioned that specific gravity is highly influenced by cambium age. reported that the effect of the transition in the diagonal direction is one of the main causes of the density change inside the trunk.

Table (1): The simple regression relationship between wood specific gravity and age within the stem of *Juniperus oxycedrus subsp. macrocarpa*.

No.Tree	Regression equation	R ²
1	SG = 0.425 – 0.001 A	70.9
2	SG = 0.426 – 0.001 A	69.5
3	SG = 0.429 – 0.001 A	59.9

A= Age, SG= specific gravity.

Behavior of wood specific gravity from pith to bark showed significant differences between this values for trees Fig.(4). Where the SG was decreased gradually from pith to sap wood then increased at the wood adjacent to bark. The last observed trend for SG values was the same for the wood, these findings were in agreement with those described by (Sheikh *et al.*, 2011), (Martinez-Meier *et al.*, 2011) and (Tashani, 2016).

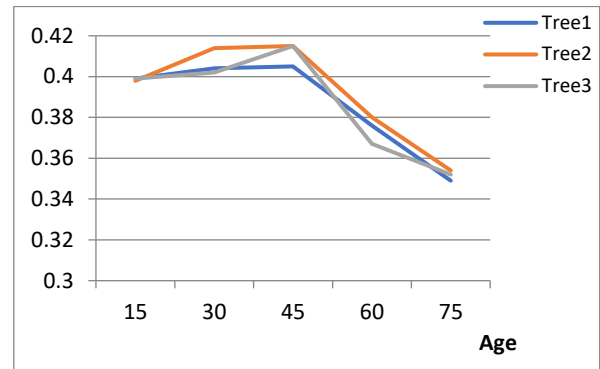


Figure 4. Radial variation of the wood specific gravity in *Juniperus oxycedrus subsp. macrocarpa* for different trees.

This may be associated with an increased percentage of extractives in heartwood compared to sapwood outside. On the other hand, The decrease of wood density from pith-to-bark is often attributed to increased light exposure and improved growth conditions in the later stages (Bastin *et al.*, 2015). Furthermore, wood density is known to be affected by environmental conditions, specific climate and age. In addition to impacts of silvicultural practices (Zobel. and Sprague, 1998) Furthermore, (Zobel. and Jett., 1995) reported a significant variation in wood density among tree locations and they also pointed out to partial effect of genetic traits on wood density. Finally, specific gravity of wood are important indicators for solid and composite wood applications and can be measured in progeny testing to evaluate elite trees.

Fibre length (FL)

Table (2) shows the radial variation in fibre length values of *J. oxycedrus subsp. macrocarpa* at dbh height. For all trees were the fiber length values had a positive relationship with the cambium age where R² values were very low ranged between 6 - 8.5%.

Figure (5) shows the mean of fiber length (mm) in wood samples from pith to bark taken from *J. oxycedrus subsp. macrocarpa* trees. It is obvious that short fiber exists in the pith region and the longest ones were manifested near the bark locus.

Table (2): The simple regression relationship between the fiber length of wood and age within the stem of *Juniperus oxycedrus subsp. macrocarpa*.

No. Tree	Regression equation	R ²
1	FL = 1.901 + 0.003 A	7
2	FL = 1.911 + 0.003 A	8.5
3	FL = 1.881 + 0.003 A	6.7

A= Age, FL= Fiber length.

Also, it is well known that the fiber length is increased gradually from juvenile wood to become steady of the wood turned to be mature wood the rate of transition from juvenile to mature wood depends on genetic traits and environmental conditions. *J. oxycedrus subsp. macrocarpa* is a short fiber wood with a mean fiber length of 1.75 mm. Whereas, (Kandeel *et al.*, 1987) mentioned in a study on *J. procera* trees that the mean fiber length was 2.89 - 3.20 mm, as well as the (Ter Welle and Adams, 1998) study arrived that juniper trees are short-fiber where the mean fiber length of ranged between 1.20 - 2.79 mm.

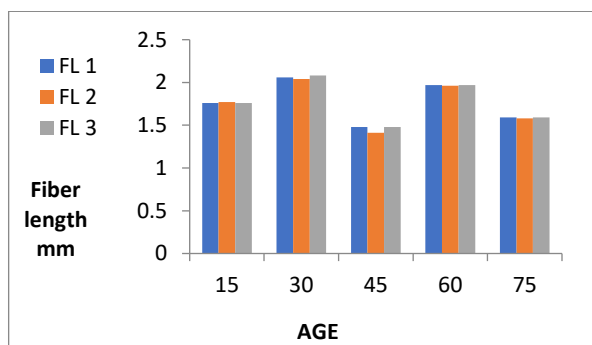


Fig.(5) : Radial variation of Fiber length in *Juniperus oxycedrus subsp. macrocarpa* for different trees

The pattern of fiber length variation in this study is related to tree cambium age. Distinct differences monitored in the fiber length among the trees This observation was supported with the findings of (Sadegh and Kiaei, 2011) and (Amaraltranco, 1968)(Bakhshi *et al.*, 2011),who mentioned that the environmental factors have no effect on fiber length. Also,(Hosseini, 2006)reported that the exploitation age or juvenile wood border in Caspian forests. Narrow ring width and variations in it from year to year should have a negative effect on fiber length variation.

CONCLUSION

Juniperus oxycedrus subsp. macrocarpa is a rare woody species found in El-Jabal El-Akhadar, Libya in site north-west Derna. The distribution of this population is physiographically dependent, where the individuals are restricted to the north-facing slope of the first rocky ridge close to the sea shore. Register this genre in The IUCN Red List of Threatened Species. Also, The morphological properties (leaf length, leaf width, seed size and cone size) resulted have been observed to be important clarify the taxonomy of this species. the results indicated of wood properties that the relationship between specific gravity and cambial age, the general trend showed that the relationship was negative with age while, fiber length increased radically from pith to bark. specific gravity of wood are important indicat for solid and composite wood applications and can be measured in progeny testing to evaluate elite trees and the suitability of wood for wood industry and charcoal Fiber length is a wood-quality parameter of important to pulp and paper making. Finally, The identification of genetic variation in morphological characteristics and wood properties is necessary for the description of local genetic resources of *J. oxycedrus subsp. macrocarpa* .

REFERENCES

-
- Abo-Hassan, A. and El-Osta, M. 1982. Variation in certain quality parameters of wood from young Casuarina windbread trees grown in Saudi Arabia. Journal of the College of Agriculture, King Saud University.
- Adams, R. P. 2012. Taxonomy of *Juniperus*, section *Juniperus*: sequence analysis of nrDNA and five cpDNA regions. *Phytologia* 94, 280e297. Adams, R.P., 2014a. *Junipers of the World: the Genus Juniperus*, fourth ed. Trafford Publishing, Vancouver, B.C. 422 pp.

- Adams, R. P. 2014. Morphological comparison and key to *Juniperus deltoides* and *J. oxycedrus*. *Phytologia* 96, 58e62.
- Amaraltranco, J. D.. Taxonomic notes on *Juniperus oxycedrus* L. and *J. Macrocarpa* Sm. *Tedder repert.* 68:16S-167. AMARALTRANCOJ.DO (1964). *Juniperus* L. In: Tutin, G., Heywood, H., Burgess, A., Valentin, H., Walters, M., Webb, A. (Eds). 1968. *Flora europaea*. Cambridge, University Press. 1: S8-S9.
- Bakhshi, R., Kiaei, M. and Veylaki, S. 2011. The effect of climate on fiber properties of Maple wood (*Acer velutinum* Boiss). *Middle-East J Sci Res*, 8, 739-746.
- Ball, J. 1878. Description of some new species, subspecies and varieties. *The Journal of the Linnean Society of London. Botany* 16: 670.
- Bastin, J.-F., Fayolle, A., Tarelkin, Y., Van Den Bulcke, J., De Haulleville, T., Mortier, F., Beeckman, H., Van Acker, J., Serckx, A. and Bogaert, J. 2015. Wood specific gravity variations and biomass of central African tree species: The simple choice of the outer wood. *PloS one*, 10.
- Bayet, C., Muracciole, M. and Lebreton, P. 1991. Le statut systématique du Genévrier oxycède *Juniperus oxycedrus* L. (Cupressacées): une contribution d'ordre biochimique et biométrique. *Lazaroa*, 21-42.
- Browicz, 1996. *Juniperus macrocarpa* Sibth & Sm. in the area of the "Flora of Turkey and East Aegean Islands". *The Karaca Arboretum Magazine (S)*: 117-121.
- Do Franco, J. A. 1963. Taxonomic notes on *Juniperus oxycedrus* L. and *J. macrocarpa* Sm. *Repertorium novarum specierum regni vegetabilis*, 68, 163-167.
- El-Barasi, Y. M. M. and Saaed, M. W. B. 2013. Threats to plant diversity in the north eastern part of Libya (El-Jabal El-Akahdar and Marmarica Plateau). *Journal of Environmental Science and Engineering. A*, 2, 41.
- El, O., El Osta, M. and Ema, A. 1981. Crushing strength of three Sudanese tropical hardwoods in relation to specific gravity, extractive and lignin contents.
- Erickson, H. D. and Harrison, A. T. 1974. Douglas-fir wood quality studies part I: Effects of age and stimulated growth on wood density and anatomy. *Wood science and technology*, 8, 207-226.
- Farjon, A. 2013. *Juniperus oxycedrus subsp. macrocarpa*. The IUCN Red List of Threatened Species. ISSN 2307-8235 (online). IUCN: T16348745A16348765.
- Fernandez Galiano, E. *Juniperus*. In: Valdés B, Talavera S, and Fernández-Galiano E [eds.], *Flora Vasculare de Andalucía Occidental*, vol. 1, 85–86. Ketres SA. 1987. Barcelona.
- Francis, R., Hanna, R., Shin, S.-J., Brown, A. and Riemenschneider, D. 2006. Papermaking characteristics of three *Populus* clones grown in the north-central United States. *Biomass and Bioenergy*, 30, 803-808.
- Franklin, G. Preparation of thin sections of sections of synthetic resins and wood resin composites, and a new macerating method of wood. *Nature*. 1945, 155(3924): 51.
- García Novo, F. and Merino, J. 1993. Dry coastal ecosystems of south western Spain. *Ecosystems of the World*, 2, 349-362.
- Ge Hu, J., M. Costa. and Biondi., E. 1990. *Junipereta macrocarpa* esursable. *Acta Bot Malacit* 15:303–309.
- Greuter, W., Hm. Burdet. and Lang., G.. *Med-checklist*, 1. Berlin-Dahlem. 1984 :Botanischer Garten and Botanisches Museum. 3.
- Haygreen, J. G. and Bowyer, J. L. 1996. *Forest products and wood science: an introduction*, Iowa state university press, Ames, Iowa, USA.
- Hindi, S. S. Z. 2001. Pyrolytic products properties as affected by raw material. PhD. Thesis, Fac. Of Agric. Alexandria Uni. 120 pp.
- Horn, R. A. 1974. Morphology of wood pulp fiber from softwoods and influence on paper strength. *Forest products lab madison wis Res. Paper FPL- 242*, 12 pp.
- Hosseini, S. Z. 2006. The effect of altitude on juvenile wood formation and fiber Length, a case study in Iranian beechwood (*Fagus orientalis* L.). *J. Agric. Sci. Technol.*, 8:221-231.
- Jalas, J. and [Eds.], J. S. 1973. *Atlas Florae Europaeae*, vol. 2. The Committee for Mapping the Flora of Europe and Societas Biologica Fennica Vanamo Helsinki.
- Juan, R., Pastor, J., Fernandez, I. and Diosdado, J. C. 2006. Seedling emergence in the endangered *Juniperus oxycedrus subsp. macrocarpa* (Sm.) Ball in southwest Spain. *Acta Biol Cracov Bot*, 48, 49-58.

- Kandeel, S. A. E., A. A. A. H., Aly, H. M. and Kherallah., I. A. 1987. The potentiality of using *Juniperus procera* of the South Western forest for kraft pulp production in Saudi Arabia. J. Coll. Agric. King Saud. Univ.9(1): 89-98.
- Kaplan, D. R. 2001. The science of plant morphology: definition, history, and role in modern biology. American Journal of Botany, 88, 1711-1741.
- Kleinbaum, D. G. and Kupper., L. L. 1978. Applied Regression Analysis and Other Multivariable Methods. Duxbury, Boston, U.S.A.
- Klimko, M., Boratynska, K., Boratynski, A. and Marcysiak, K. 2004. Morphological variation of *Juniperus oxycedrus subsp. macrocarpa* [Cupressaceae] in three Italian localities. Acta Societatis Botanicorum Poloniae, 73.
- Klimko, M., Boratyńska, K., Montserrat, J. M., Didukh, Y., Romo, A., Gómez, D., Kluz-Wieloch, M., Marcysiak, K. and Boratyński, A. 2007. Morphological variation of *Juniperus oxycedrus subsp. oxycedrus* (Cupressaceae) in the Mediterranean region. *Flora-Morphology, Distribution, Functional Ecology of Plants*, 202, 133-147.
- Köroğlu, A., Kendir, G., Simsek, D., Miceli, N. and Pinar, N. M. 2018a. The morphological properties of leaves, cones, seeds of some *juniperus* species native to Turkey. Communications Faculty of Sciences University of Ankara Series C Biology, 27, 61-84.
- Köroğlu, A., Kendir, G., Şimşek, D., Miceli, N. and Pinar, N. M. 2018b. The morphological properties of leaves, cones, seeds of some *juniperus* species native to Turkey. Communications Faculty of Sciences University of Ankara Series C Biology, 27, 61-84.
- Linnaeus, C. 1753. Species Plantarum 2. Laurentii Salvii, Stockholm, pp. 560e1200. Loreto, F., Schnitzler, J.P., 2010. Abiotic stresses and induced BVOCs. Trends Plant Sci. 15, 154e166.
- Martinez-Meier, A., Gallo, L., Pastorino, M., Mondino, V. and Rozenberg, P. 2011. Phenotypic variation of basic wood density in *Pinus ponderosa* plus trees. Bosque, 32, 221-226.
- Mohamed, T. E. 2004. . Effects of mixing some wood and non-wood lignocellulosic materials on the properties of cement and resin bonded particleboard. Ph. D thesis, Khartoum University, Sudan.
- Osazuwa-Peters, O. L., Wright, S. J. and Zanne, A. E. 2014. Radial variation in wood specific gravity of tropical tree species differing in growth–mortality strategies. American journal of botany, 101, 803-811.
- Panshin, A. J. and Dezeew., C. Textbook of wood technology. 1980 McGraw-Hill Inc. N.Y.
- Pinna, M. S., Mattana, E., Cañadas, E. M. and Bacchetta, G. 2014. Effects of pre-treatments and temperature on seed viability and germination of *Juniperus macrocarpa* Sm. Comptes rendus biologiques, 337, 338-344.
- Prakash, A. 2019. Study of morphological characters of transplanted trees with special reference to their medicinal importance. Indian Journal of Scientific Research, 9, 21-30.
- Roma-Marzio, F., Najar, B., Alessandri, J., Pistelli, L. and Peruzzi, L. 2017. Taxonomy of prickly juniper (*Juniperus oxycedrus* group): A phytochemical–morphometric combined approach at the contact zone of two cryptospecies. *Phytochemistry*, 141, 48-60.
- Sadegh, A. N. and Kiaei, M. 2011. Formation of juvenile/mature wood in *Pinus eldarica* medw and related wood properties. World Appl. Sci. J, 12, 460-464.
- Sheikh, M. A., Kumar, M. and Bhat, J. A. 2011. Wood specific gravity of some tree species in the Garhwal Himalayas, India. *Forestry Studies in China*, 13, 225.
- Smith, D. M. Maximum moisture content method for determining specific gravity of small wood samples. MSDA Forest Product Laboratory Report No. 2202, Madison, WL1954. 8pp.
- Smith, J. In: Sibthorp J, and Smith J. [eds.], *Flora Graeca* Podromus. 1816. London.
- Tashani, A. Genetic diversity and effect of environmental variation on wood formation for some woody trees growing in EL-jabel EL-akhdar region (Libya). Ph. d. Agriculture, Alexandria University. 2016.
- Ter Welle, B. and Adams, R. 1998. Investigation of the wood anatomy of *Juniperus* (Cupressaceae) for taxonomic utilization. *Phytologia*, 84, 354-362.
- Vaičiulytė, V. and Ložienė, K. 2013. Variation of chemical and morphological characters of

-
- leaves and unripe cones in *Juniperus communis*. *Botanica Lithuanica*, 19, 37-47.
- Wani, B. A., Bodha, R. and Khan, A. 2014. Wood specific gravity variation among five important hardwood species of Kashmir Himalaya. *Pakistan Journal of Biological Sciences*, 17, 395-401.
- Zobel., B. and Jett., J. 1995. Genetics of wood production. berlin- heidelberg, germany. Springer- Verlag. 337 p.
- Zobel., B. and Sprague, J. 1998. Juvenile wood in forest trees. berlin- heidelberg, germany. Springer- Verlag. 300 p.
- Zunni, S. A. and Bayoumi, A. M. .2006. Important local and exotic trees and shrubs in Jabal el-Akhdar, Libya (In Arabic). Aldar Academy for printing, authoring, translation and publishing. Tripoli, Libya. 270pp.